



Business Intelligence

Advanced Telematics



Optimize your business with

fleetMaster

Fleet Management

BFMS[®]
Brilliant Fleet Management Solutions



fleetMaster

Welcome to FleetMaster™

In a world of permanent movement and expansion, for the companies which rely on transportation in their business, the necessity of managing and controlling their moving assets is essential. Understanding their market and business needs, our team, with more than 15 years of experience in telematics and software development, has created FleetMaster.

FleetMaster is now the flagship product of our company and we are proud to say that is a complete Fleet Management Solution that helps our clients to remove or minimize the risks associated with vehicle investment, improving efficiency, productivity and reducing their overall transportation and staff costs, providing in the same time complete compliance with government legislation.

FleetMaster is covering all the fleet management range of functions such as vehicle financing, vehicle maintenance, vehicle telematics (GPS tracking, OBD diagnostics, ...), driver management, speed management, fuel management, health and safety management, etc.

Even from the beginning, due to our expertise in Advanced Telematics, Software Development and Business Intelligence, we have designed FleetMaster as a client-oriented product, with strong business orientation and specially fitted to every business model. Our Research & Development Department works every day for bringing smart innovations to our product and provides advanced technologies related to telematics and optimization algorithms.

As founder and managing partner of the company I address to the customers, partners and industry players a simple message: **Optimize your business with FleetMaster!**

Adrian Boaru
CEO



Why FleetMaster™

As the demand for fleet management and tracking solutions grows, so has the complexity of choices. There are hundreds of regional providers who offer GPS tracking capabilities (as an add-on to another software package instead of a core competency) and even mobile phone providers are offering GPS fleet tracking solutions.

Most of them are marketing for the same titles like Fleet Management, GPS Tracking or Route Optimization solution, make similar promises and attempt to address the same pains - fuel costs, productivity, operating expenses, inflated payroll, tedious dispatching methods, safety, theft prevention, speeding, harsh driving, idling, and more. To make it tougher - many of the solutions appear to be very similar.

So how do you figure out if you're going to get your money's worth, and if you're making the right choice for your business? To help your decision, seek to understand how WELL these solutions actually deliver on solving your problems.

How easy is it to achieve these goals? How easily can you use the reports to identify excessive fuel purchases? How quickly can you find what you're looking for on the map? How route and cost optimization works for your business case? The true difference is no longer simply a list of features, rather it is how customer-focused a vendor is, how thoughtful they are in designing their product, and how much value they place on customer service.

When you choose a provider, you might have to live with your choice for a long time; after all, many vendors require term contracts. Even after that, the price of change is high - cancellation penalties, retraining your team, taking vehicles off the road again (just to name a few factors).

Bottom line: spend the time and energy up front to make the right choice for a long term partnership. Choose the best partner by taking in consideration the real Return of Investment factor as you and your partner will evolve together with your business and market changes.

We at FleetMaster are a core competency team that sincerely hope you will find our solution and us as a provider the right choice that fits your needs and drives the type of results we both know are achievable.



LIVE TRACKING

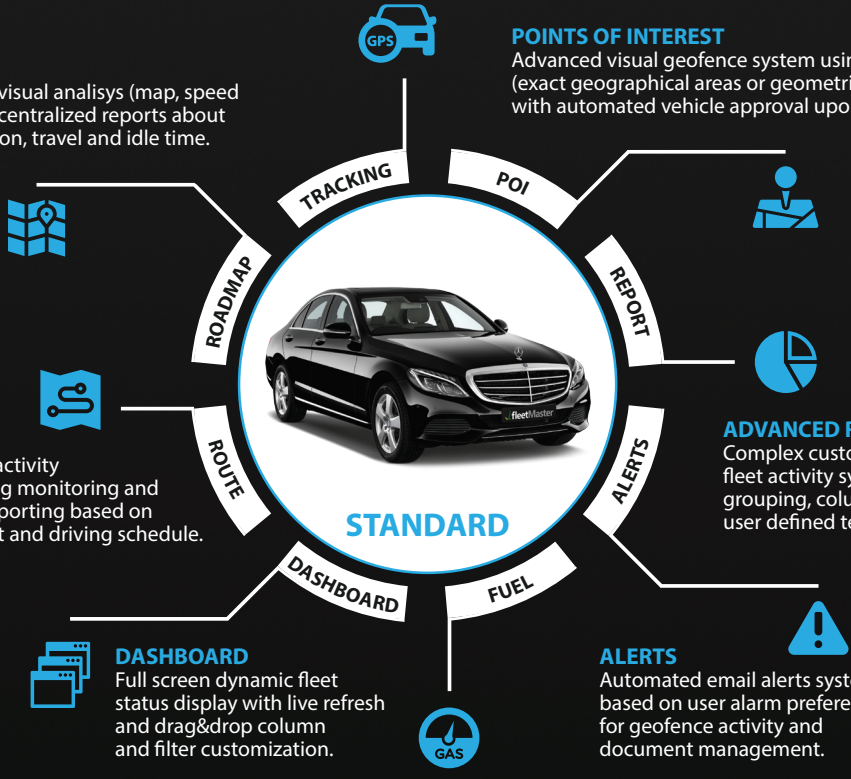
Real-time GPS vehicle tracking with visual localization on 2D, Satellite and 3D maps including full geocoding and vehicle state parameters reporting (like address, communication status, engine status, gps signal, etc.)

ROADMAP

Complete roadmap visual analysis (map, speed chart, timeline) and centralized reports about distance, consumption, travel and idle time.

ROUTING

Route establishing, activity management, driving monitoring and route completion reporting based on the points of interest and driving schedule.



POINTS OF INTEREST

Advanced visual geofence system using user defined points of interest (exact geographical areas or geometrical shapes defined directly on the map) with automated vehicle approval upon entry/exit from the area.

ADVANCED REPORTING

Complex customized reporting and fleet activity synthesis, using filters, grouping, columns selections and user defined templates.

ALERTS

Automated email alerts system based on user alarm preferences for geofence activity and document management.

FUEL MONITORING

Fuel consumption monitoring based on advanced consumption algorithms and fuel supply data import.

DASHBOARD

Full screen dynamic fleet status display with live refresh and drag&drop column and filter customization.

ADVANCED DATA COLLECTION

Multi-criteria data collection from GPS, CAN and other specific sensors (speed, torque, engine temperature, fuel level, acceleration, deceleration, panic button, RFID identification, etc.) with graphical drill-down display.

DRIVER BEHAVIOUR

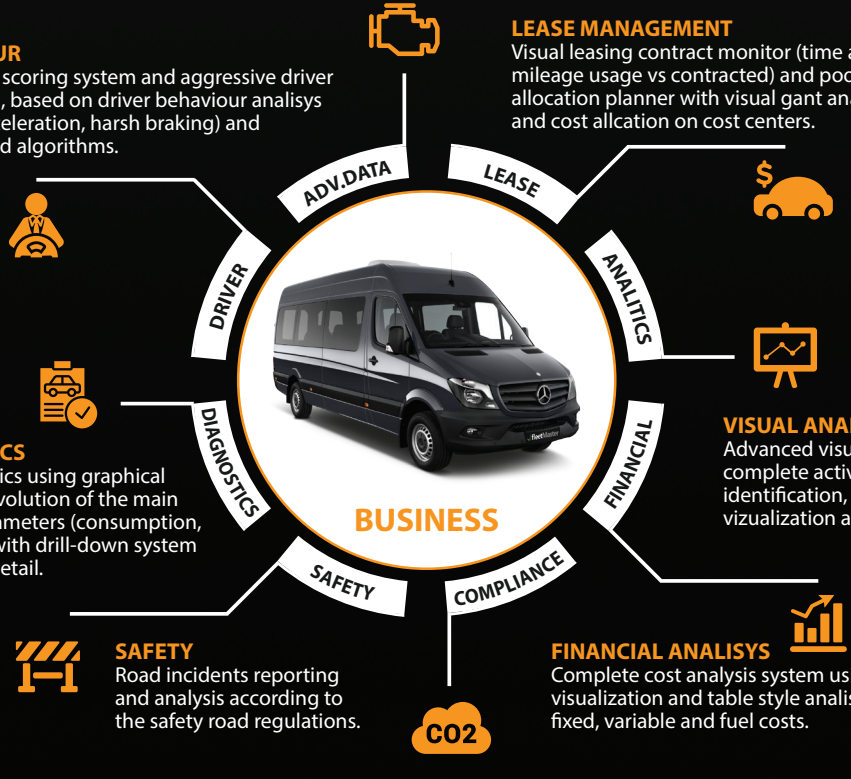
Customizable driver scoring system and aggressive driver behaviour detection, based on driver behaviour analysis (speeding, harsh acceleration, harsh braking) and proprietary advanced algorithms.

LEASE MANAGEMENT

Visual leasing contract monitor (time and mileage usage vs contracted) and pool car allocation planner with visual gant analysis and cost allocation on cost centers.

FLEET DIAGNOSTICS

Visual fleet diagnostics using graphical statistics and time evolution of the main fleet monitored parameters (consumption, km, speeding, etc.) with drill-down system to the car or driver detail.



VISUAL ANALYTICS

Advanced visual fleet activity timeline with complete activity track, speeding charts, idle time identification, graphic event and fuel charging visualization and visual route status completion.

FINANCIAL ANALYSIS

Complete cost analysis system using graphic visualization and table style analysis based on fixed, variable and fuel costs.

COMPLIANCE DATA

Green fleet visual synthesis based on CO2 emissions recordings with graphical visualization and filtering for compliance and future CO2 reduction decisions.



fleetM

COMMUNICATION

Live driver messaging, tasks communication, radar display, SOS button, driving statistics and GPS navigation instructions using mobile devices.

ROUTE OPTIMIZATION

Advanced route optimization engine, using state of the art algorithms for fast and accurate route planning and scheduling, that cuts planning times and transport costs and improves productivity and customer service.

AUTO REPORTING

Automatic reporting engine based on scheduled reporting rules with email connectivity and report sending.



ENTERPRISE



VIDEO

LIVE VIDEO

Dual camera event recording (street and driver view) and on demand photo/video live streaming.

OPTIMIZE



TASKS



TASKS & ORDERS

Tasks and work orders management module with automatic geofence presence identification and manual mobile work status confirmation.

B.I.

BUSINESS INTELLIGENCE

Business Intelligence data analysis interfaces for multi-company, multi-regional and multi-criteria fleet management data structures.

DISPATCH

DISPATCH

Dispatch wallscreen style display with multiple simultaneously live monitors for real time command & control centers (maps, alarms, communications, video analysis, etc.)

ERP/API INTEGRATION

Custom ERP integration module using Web-API interfaces that ensures a complete dataflow for automatic applications.

ENTERPRISE PACKAGE

Master

INDUSTRY SPECIFIC

DISTRIBUTION & LOGISTICS

Multiple depot, capacitated, pick-up and delivery automated routing solution using state of the art planning and optimization engine with or without backhaul and time window constraints.

PUBLIC TRANSPORTATION

Complete public transportation solution using route and interstation time windows planning, passenger information system, safety video monitoring, dispatching and bidirectional driver communication.

UTILITIES & WASTE MANAGEMENT

Public and private utilities contract management, with automated waste collection and disposal planning, RFID can loading counter, driver information and navigation system and complete detailed activity monitoring.

BFMS®

Briliant Fleet Management Solutions



PUBLIC



POSTAL



SECURITY & FIRE

Automated fire and security dispatch for alarm and intervention monitoring, with auto-track team allocation and alarm site on-car navigation instructions, intervention time monitoring and public safety reports.

DISTRIBUTION

UTILITIES

AMBULANCE

AMBULANCE

Off and On Duty ambulance signals monitoring with video cabin and road imaging, optimal route navigation and on-map dispatching for route clearing and smart cities ambulance access.

SECURITY

TAXI

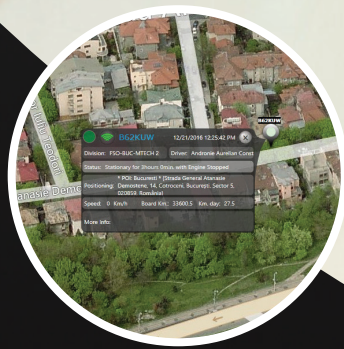


TAXI

Uber-style taxi automatic order, navigation and billing system with live dispatch, high accuracy distance and cost pre-calculation, official on-line and off-line billing and fiscal system link and reports.

INSURANCE

Complete telematics solution for UBI (Usage Based Insurance) allowing insurers to create PHYD (Pay How You Drive) insurance services using a scoring system that analyses driver's behaviour.



LIVE TRACKING

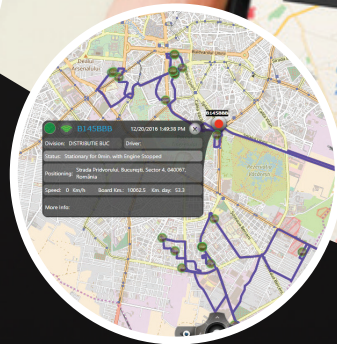
KEEP AN EYE ON YOUR FLEET

One of the major benefits of GPS tracking is that you can see the location of every vehicle in real-time, in different modes and on different maps.

With FleetMaster you have both centralized and detailed position reporting, making your job easier and more productive.

LIVE 2D/3D MAPS

- The best tracking results and position accuracy
- The most popular maps in the world: OpenStreet, Bing, ArcGis and Google
- Full zooming capabilities
- multiple layers: 2D, 3D, Terrain, etc.
- Automatic zoom and vehicle tracking in autoplay mode



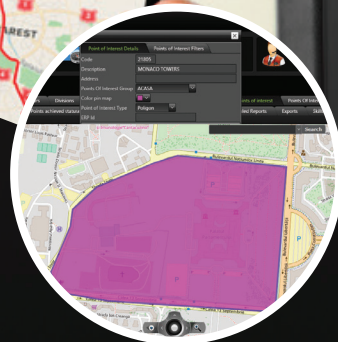
ROADMAP

SEE EVERY ACTION FROM POINT A TO POINT Z

Gain the unique ability to see a visual and interactive display of vehicle activity so you can watch any trip from start-up to shutdown. Also, look at journeys from any date so you'll know where your drivers spent their time, all the time.

MAP & TIMELINE VIEW

- A view where early starts, early finishes, off-hour activity, long stops and excessive idling become completely obvious
- Check on the map the route and reduce the human error with automated time sheets and usage reports



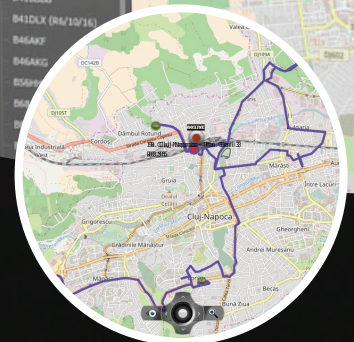
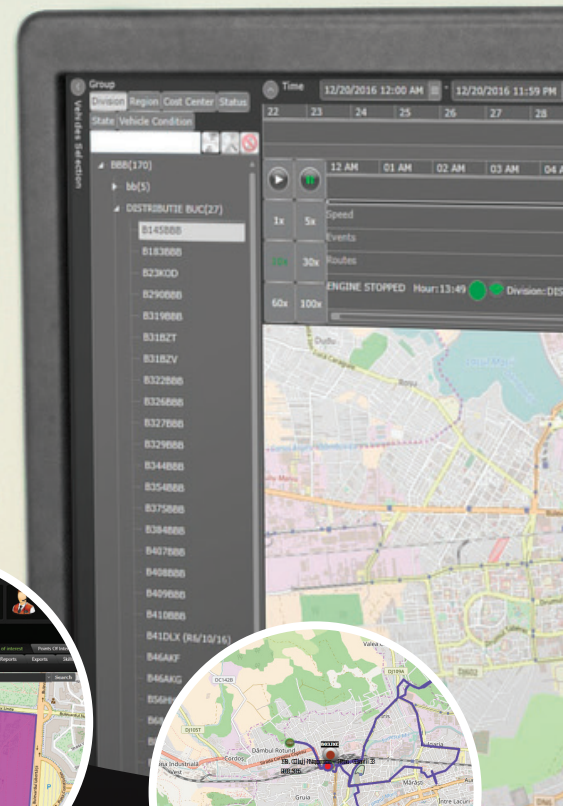
POINT OF INTEREST

SAY GOODBYE TO THE MISSING PIECES

No longer will you be stuck managing thousands of points of interest by hand. With FleetMaster you can automatically create and categorize locations based on your drivers visits.

GEOFENCES

- Define both geofences and interesting locations
- Free shape design directly on the map
- Use the points for replacing reading addresses or to create virtual perimeters around real-world locations
- Control the activity with automated events and alerts



ROUTING

PLAN, MONITOR AND CONTROL YOUR ACTIVITY

Creating routes and establishing schedules puts you in control of your drivers activity.

With FleetMaster Routing you can create the rules, monitor your drivers and check route completion and optimize the activity.

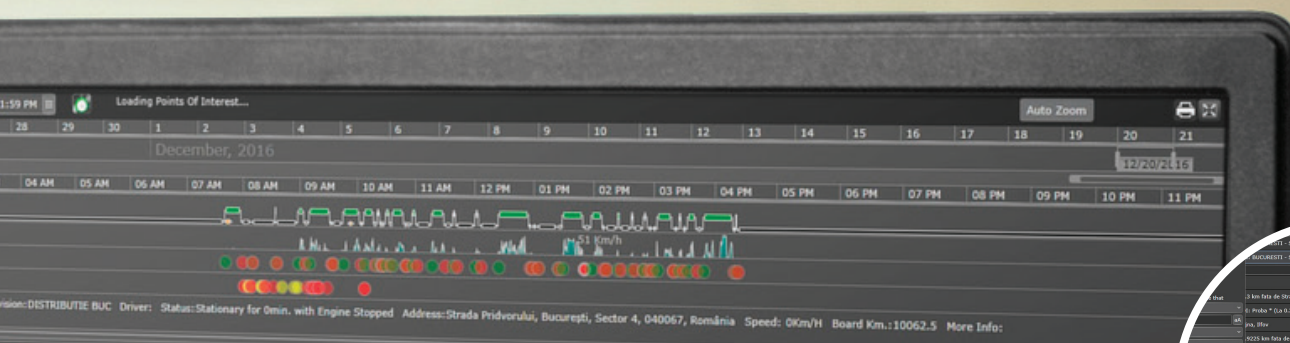
ROUTES

- Plan as much routes as you want, using the already defined points of interest
- Create schedules for your routes and drivers
- Visualize the routes on the map, timeline and reports
- Check route completion, with touched, untouched and delayed targets



STANDARD Package

FULL CONTROL AND ABILITY TO DRIVE CHANGE ACROSS YOUR ENTIRE FLEET



FUEL MONITORING

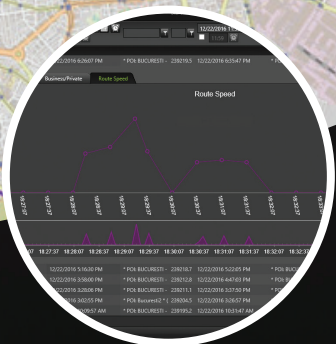
CONTROL FUEL COSTS

Fuel is a necessity for any transportation business. When gas prices rise unexpectedly, you are stuck with having to pay top prices for fuel.

FleetMaster can increase fuel efficiency by identifying where in your fleet there is room for improvement. Once you know where fuel is slipping through the cracks, you can take steps to reduce your fuel costs.

HOW WE REDUCE FUEL COST

- Reducing vehicle speed
- Decreasing idle times
- Improving routing and dispatching
- Properly maintaining the vehicles
- Integrating with fuel cards
- Verifying fuel supply compared with calculated consumption



ADVANCED REPORTING

CUSTOM REPORTING IS BETTER REPORTING

FleetMaster's reports have the unique ability to turn data into useful and actionable information so you know more than just where vehicles were.

Every report from our system is completely customizable and provides all the data you can ask about your fleet activity.

REPORTING FLEXIBILITY

- Every user can have its's own reporting templates
- Easy drag&drop column grouping
- SQL filtering, column selection and ordering
- Printing and exporting to most common formats: PDF, Excel, Word, etc.
- Synthesis and drill down reporting



ALERTS

BE PRODUCTIVE AND LET THE SYSTEM DO THE WORK

Setting up alerts is critical for monitoring undesired driving behavior.

By setting an alert, you will be notified in real time on email when unwanted event occurs (e.g. speeding, extended idling, entering areas they shouldn't be, low battery, communication failure, etc.).

These email alerts can be delivered to any number of recipients. In addition, all the alerts are stored in the Alerts Report for later reporting.

ALERTS

- Location Alert: a vehicle enters and/or exists a specific area
- Event Alert: engine on/off, battery, communication, etc.
- Document Alert: expiration of vehicle and driver documents, service interval, etc.
- Activity Alert: idling, moving, speeding



DASHBOARD

HOW OUR PRODUCT MAKES A REAL DIFFERENCE

Start understanding the true impact your fleet's performance has on your business through a number of dashboards that answer previously unanswered questions.

That's what we call a fleet tracking solution.

Easy-to-read visuals and a simple layout gives you a closer look on your fleet's real-time performance.

SEE EVERYTHING

- Full screen support
- Dynamic real time fleet status display
- Drag&drop column and filter customization
- User defined live refresh
- Fast search, filter and vehicle selection
- Right click navigation with contextual graphical menu on every vehicle



ADVANCED DATA COLLECTION

EXCEPTIONAL GRAPHICAL ANALYSIS OF YOUR CAR'S DATA

From GPS to CAN and advanced sensors, all the data from your car is gathered and processed in real time, providing a complex analysis tool over many parameters.

The graphical synthesis display, with interpolation of up to 50 variables, is an exceptional diagnose and drill-down analysis tool for any fleet manager.

CAR DATA REVEALED

- CAN/OBD Data reading (speed, torque, temperature, diagnose codes, odometer, consumption, etc.)
- Fuel sensors, temperature sensors, RFID readers and any other inputs reading
- 24 hours graphical display with 30 minutes to 1 minutes interpolation intervals
- Unique graphical view with optional CAN parameters based on car model options



DRIVER BEHAVIOUR

DANGEROUS OR SAFE?

The driver behavior scoring system creates a simple and accurate image over how your drivers are using the vehicles.

Detecting the aggressive drivers is a preventive method for many issues: driver safety, car parts damage, abnormal consumption, insurance costs, and is an important part of the driver coaching process.

ABOUT SCORING

- Proprietary algorithms that analyses driver behavior
- Speeding, harsh acceleration, harsh braking, harsh cornering are turned into points
- Customizable driver classification based on scoring results: Dangerous, Unsafe, Normal, Safe, Exceptional



VISUAL ANALYTICS

TIME, ACTIVITY, EVENTS INTO ONE SMART VIEW

The bigger the fleet is, the most difficult is to analyze all day activity into standard report sheets. But what if you could have a complete graphical activity overview?

The FleetMaster Timeline is an advanced visual display that puts all the data into a graphical timeline and gives you the ability to see and drag conclusions in seconds.

TIMELINE VIEW

- Graphical timeline with roadmap and stops
- Speed chart, idle time, fuel charge and event view
- Tasks, routes and colored status display
- Scalable timebar for detailed view (24h to 1 minute display)



FLEET DIAGNOSTICS

SEE AND CONTROL CONSUMPTION TRENDS

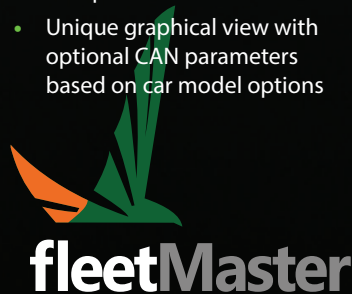
Have you ever wondered what is the consumption behavior during one month and how it evolves during the year?

And even more - what cars are consuming more and why?

Using the graphical statistics you can see in seconds what is happening with your fleet, what is the consumption pattern, what is the consumption evolution and who is over speeding.

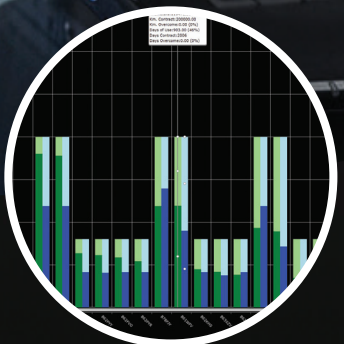
STATISTICS

- Graphical chart with consumption vs km/time
- Daily view or car view
- Top speed every day
- Day and vehicles drilldown analysis



BUSINESS Package

ANALYZE YOUR BUSINESS AND KEEP OPERATIONAL COSTS UNDER CONTROL



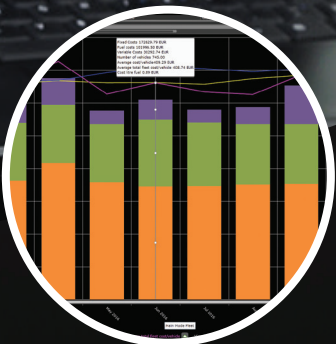
LEASE MANAGEMENT

TAKE FULL ADVANTAGE OF YOUR LEASE CONTRACTS

The actual trend of fleet based business indicates that leasing is the right way to optimize and grow your business. But how do you keep control over leasing conditions? Do you know if in 2 years you will end up paying for extra miles? With FleetMaster you can visually analyze leasing contracts and detect from time the balance between lease time and mileage in order to optimize the usage.

LEASE CONTROL

- Lease time vs mileage graph chart
- Car pool allocation planner
- Visual gantt analysis
- Lease cost allocation on cost centers



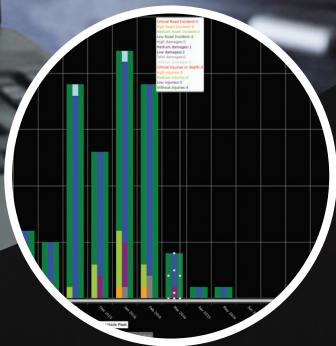
FINANCIAL ANALYSIS

RUN YOUR BUSINESS BASED ON FINANCIAL MODEL

No matter how many types of costs you have, how many cost centers or how many cars, FleetMaster manages all the data and brings out state of the art cost control analysis that gives you full image and control over your fleet expenses. Set your budget and follow your KPI's evolution with simple and efficient cost control tool, inside your fleet management tool.

COST ANALYSIS

- Complete visual analysis of fixed, variable and fuel costs
- Import and manage all kind of costs: lease, fuel, service, supplies, insurance, licenses, etc.
- Month view with daily cost allocation
- Multiple years cost evolution with monthly cost visualization
- Vehicle level drill-down cost allocation



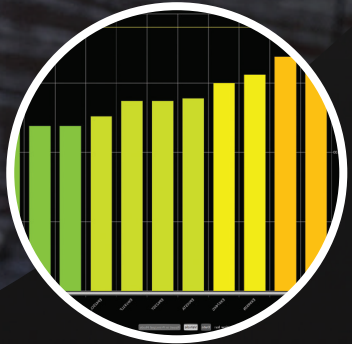
SAFETY

SAFETY REGULATIONS

As safety regulations keeps a very strong trend in automotive industry we come into your support by bringing a graphical analysis to road incidents. We aim to categorize incidents and to give preventive information to fleet managers in order to coach the drivers. Also we give a visual control over road incidents evolution, aiming to minimize the road incidents and to keep a safe driving trend.

ROAD INCIDENTS

- Analyze road incidents type: Critical, High, Medium, Low
- Categorize Damages: Total, High, Medium, Low, Without
- Keep track of injuries: Critical/Death, High, Medium, Low, Without



COMPLIANCE DATA

RESPECT ENVIRONMENT AND REDUCE CO2

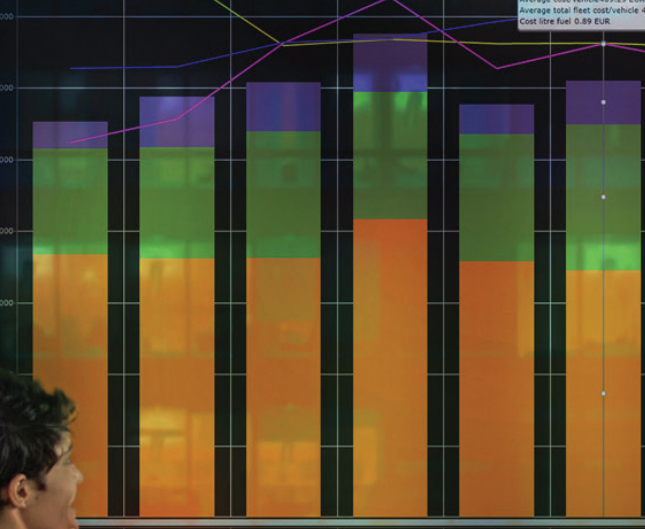
Environmental taxes are today directly connected to the pollution factor of the fleet and keeping a green fleet means, apart from protecting the environment, protecting your own business by reducing taxes.

FleetMaster provides a visual tool for analyzing CO2 emissions of the fleet and to rapidly find out which vehicle pollutes more and creates environmental costs.

KEEP YOUR FLEET GREEN

- Categorize the vehicles in your fleet by CO2 emissions
- Helps in taking decisions for vehicle replacement
- Graphical compliance report for management purposes

Number of vehicles 745.00
 Average cost/vehicle 499.29 EUR
 Average total fleet cost/vehicle 400
 Cost litre fuel 0.89 EUR



COMMUNICATION

REAL TIME DRIVER COMMUNICATION

The most important element of any business is communication. For the vehicle driven business, to communicate in real time with the drivers is the next step for a successful fleet management. With FleetMaster, using a dashboard tablet, you are directly connected to the driver, for managing all the actions and tasks that the drivers must do.

COMMUNICATE

- Send and receive custom messages, SOS messages and radar announcements
- Communicate tasks and orders and receive status from the driver
- Give statistics information to the driver about his roadmap, driving history, diver behavior
- Help the driver to navigate to destination points using optimal route



DISPATCH

MULTI MONITOR CONTROL CENTER AT YOUR FINGERS

From the scratch, FleetMaster has been designed to work as a command and control center, using many simultaneous displays for live dispatching purposes.

In fact Fleetmaster operates with an unlimited number of displays, creating from small to room size wallscreens.

COMMAND CENTER

- Multiple fullscreen monitor support
- Live refresh of operating displays
- Various information display based on specific industry requirements: maps, alarms, communications, video, graphical dashboards, etc.
- Multiple dispatches and multi operator support



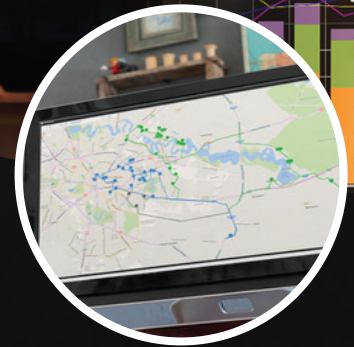
TASKS AND ORDERS

WORK FORCE MANAGEMENT IS NOW SIMPLE

With FleetMaster you can manage the entire workforce with complete control over the tasks completion and physical presence in the designated area. Used together with the driver tablet and API WFM integration, it creates the most powerful work force management system, with automatic job monitoring.

TASK MONITORING

- Automatically create tasks from API integration with existing WFM systems
- Monitor the presence into the designated POI, with automatic time classification: On Time, Delayed, Missed
- Manual status confirmation based on custom status definitions (ex: Problem Solved, Problem not solved, Parts needed, etc.)



ROUTE OPTIMIZATION

OPTIMIZE YOUR ROUTE, OPTIMIZE YOUR BUSINESS

Route optimization is a complex task that can improve benefits with up to 40%. All the vehicle driven industries needs to optimize their costs by reducing fuel consumption and driving time. FleetMaster is one of the most advanced route planning and optimization systems with proven results in many industries.

HOW WE OPTIMIZE

- We calculate the optimum loading and unloading pattern
- We optimize the route using state of the art algorithms
- We take in considerations all types of constrains
- We help the operators to do al the routing process in seconds
- We communicate the optimal routes to the drivers and we monitor the route completion



ENTERPRISE Package

OPTIMIZE YOUR BUSINESS WITH FUTURE PROOF FLEET MANAGEMENT



LIVE VIDEO

NOW YOU CAN SEE THE DRIVER AND THE ROAD

Have you ever wonder what happened before an accident or an unexpected event? Have you ever been asked by the insurance company or police about whose fault it was?

Using FleetMaster with Live Video module, you will have every event covered by a special video feed.

A Full HD Video with sound will show you every detail of the driver and the road in a dual view!

EVENT RECORDING

- Record audio-video feed with custom time before and after any event
- Generate on demand and panic button video events
- Detect any harsh braking, harsh acceleration, accident and bumps and record it
- Use the video as evidence in case of accident



AUTO REPORTING

THE SYSTEM THAT WORKS FOR YOU

Keeping the track of all operations and report to the involved personal the relevant data can be time consuming and maybe in some situations inoperative.

This is why FleetMaster can be programmed to generate reports by itself, using custom scheduling and reporting rules and to send them automatically to the designated people.

REPORT AUTOMATION

- All existing reports can be scheduled to be automatically generated
- Data filters based on user level access
- Multiple file format generation: PDF, Excel, etc.
- Database storage for later view
- Automatic email delivery to designated recipients



BUSINESS INTELLIGENCE

BI SHOWS YOU THE PAST AND THE FUTURE

Essentially the FleetMaster BI helps you to acquire a much clearer idea of the internal operations of your business. All our Dashboards and Reports are designed as a BI tool, allowing you to visually monitor the business operations and to conduct analysis and identify trends that may affect the benefits of your business.

FLEET MANAGEMENT BI

- Custom dashboards for all fleet management business categories
- Data analysis based on multiple filtering criteria: company, region, department, cost center, statuses, etc.
- Custom graphical views with detailed drill-down information
- KPI monitoring
- Visual trending model



ERP/API INTEGRATION

WE CONNECT!
WE COMMUNICATE!

As part of an entire company ecosystem, FleetMaster acts as a workflow connected part and communicates with the other systems, completing the vehicle driven businesses.

We understand that any business needs and ERP for consolidated reports and we integrate seamlessly with any ERP on the market.

CONNECTION BENEFITS

- Automatic database synchronization (clients, depots, vehicles, orders, etc.)
- Data import: financial data, operational data, etc.
- Data export: positioning, tracks, routes, loadings, etc.
- Industry specific custom API integration



ROUTE PLANNING

Plan your route automatically based on your business needs



FLEET MONITORING

Communicate with your drivers and control your fleet.



COST OPTIMIZATION

Optimize your costs and improve customer service.



DISTRIBUTION & LOGISTICS

DISTRIBUTE MORE! WE OPTIMIZE YOUR COSTS

FleetMaster comes with a state of the art routing system that redefines the distribution and logistics business.

We take control over your clients, orders, vehicles and drivers and we optimize everything: truck loading, optimum route planning, delivery and real time confirmation, driver instructions, comparative reports.

ROUTE OPTIMIZATION

- Use less vehicles by loading at optimum capacity
- Shorten the routes and delivery times by automatically planning the routes
- Reduce fuel and salaries costs
- Reduce planning and dispatching personnel by linking to ERP



PUBLIC TRANSPORTATION

E-TRANSPORT

FleetMaster comes to help both community and public transportation through latest technology solutions. It's always nice as a passenger to see how far away the bus you are waiting for is and how much longer will get him to get to the station you are.

SMART TRANSPORTATION

- Route planning and driver communication system
- Automatic dispatching and monitoring
- Passenger information system
- Safety video monitoring
- Smart city traffic management integration



UTILITIES & WASTE MANAGEMENT

GREEN CITIES NEEDS SMART SOLUTIONS

For the Utilities and Waste Management operators, FleetMaster acts as a completely integrated optimization engine no matter if we speak about public or private services. Starting from the contracts we optimize your routes, we create your daily tasks and we make sure that every task has been completed.

CONTROLLED COLLECTION

- Waste collection and disposal route planning
- Driver information and navigation system
- Loading confirmation and specific counters
- Route completion reporting and adhoc scenarios
- ERP/API full integration



POSTAL & DELIVERY

OPTIMIZED SERVICE WITH COSTS REDUCTION

FleetMaster comes with a innovative system for automatic pick-up and delivery route planning, offering control and precision to every order.

Linked to the internal AWB system, FleetMaster acts a complete automated dispatch with live map tracking, driver navigation, geofence presence and on-door delivery confirmation.

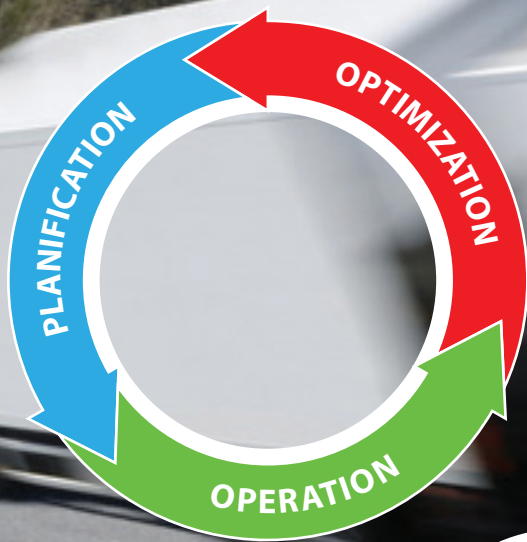
SERVICE OPTIMIZATION

- Use less vehicles by loading at optimum capacity
- Shorten the routes and delivery times by automatically planning the routes
- Reduce fuel and salaries costs
- Improve client satisfaction by offering new service quality
- Monitor special values transportation with 24h security dispatching



INDUSTRY SPECIFIC Package

TAILOR MADE INDUSTRY SOLUTIONS THAT MANAGES THE ENTIRE WORK FLOW



AMBULANCE

SAVE TIME! SAVE LIVES!

The goal of any ambulance service is to get in time to destination and insure fast access to hospital facilities.

FleetMaster optimize intervention times by automatic dispatching and provides full integration with smart cities for emergency traffic clearance.

E-AMBULANCE

- Ambulance signals monitoring and video surveillance
- Automatic on-map dispatching and optimal route navigation
- Smart cities integration for route clearance
- Complete fleet management solution



SECURITY & FIRE

SAFETY FIRST!

For any Fire & Security dispatch the main issue is to synchronize all alarm signals with intervention teams.

With FleetMaster we automatize all this process and we offer a simple integrated solution that delivers actions and responses to fire & security business.

AUTOMATIC DISPATCHING

- Integration with any security dispatch
- Live on-map visualisation of objectives, alarms and intervention teams
- Automatic alarm dispatch and team allocation
- In car navigation instructions, intervention time monitoring
- Live intervention reports



INSURANCE

INSURANCE TELEMATICS

FleetMaster is a complete Usage Based Insurance Advance Telematics solution suitable for any insurance company.

Based on advanced scoring algorithms, FleetMaster can create flexible PHYD (Pay How You Drive) patterns allowing the insurance company to create dynamic insurance products.

PAY HOW YOU DRIVE

- Harsh braking, acceleration and cornering detection
- Real speeding reports
- Day/night and road type analysis
- Customized client mobile application
- Insurer analysis system API integration



TAXI

UBER-TAXI

FleetMaster comes with modern features that every taxi infrastructure needs: live tracking of the vehicles, anticipation of cost, route optimization, safety systems and multiple payment options.

As a taxi operator you can have an automatic dispatch, with Uber-style mobile application and complete control over the entire activity.

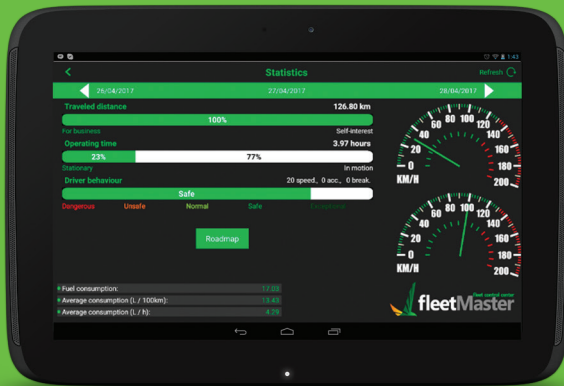
TAXI INFRASTRUCTURE

- Automatic dispatching with orders coming from mobile app or phone
- Complete route and cost precalculation
- Online and in-car payment options with local fiscal approval
- Dedicated taxi device with navigation, billing and dual video camera
- Live fiscal and operational reports to taxi operator and municipality

FleetMaster Driver

FleetMaster Driver is a mobile application dedicated to drivers and it is designed to be used as a dashboard tablet using standard or industrial mobile devices.

The Driver application provides the ultimate workforce tool and connects the driver with the dispatch in real time. Whether we talk about live communication, driving information, task management or navigation, everything that means mobility can be easily accessed by the driver using FleetMaster Driver.



Technology

FleetMaster is a cloud based application and has been designed to expand without limits and to operate large scale fleets without any constraints.

As it is the flagship product of our company, FleetMaster was created using the latest programming and database technologies and it is tested and improved by our team continuously.

The user interface is 100% web based, accessible from any browser and capable of working in a multi-monitor environment with dispatch capabilities as well as in a standard laptop or desktop.

As we are dedicated to big data processing and we understand the confidentiality of user data, we ensure the business safety of our clients by adopting the best quality

and security standards in the industry:

- ISO 9001, 14001 and 27001 Certificates
- Geotrust Extended Validation SSL Certificate
- NATO NCage Certificate
- Police and Fire Department Certifications

FleetMaster Mobile Features and Benefits

FleetMaster Mobile makes life simple for fleet managers and brings all the necessary information to their fingers.

Track & Trace

See all your vehicles on mobile device, as a list or as a map, and search/filter/order the vehicles as you wish.

Roadmap

Check the roadmap of any vehicle and see on the map the graphical route.

Alerts

Receive alerts from your fleet in real time and access the details without time restrictions.

Driver Behavior

Check the driving score and behavior of your drivers and make instant decisions.

Statistics

Complete graphical overview over your fleet's activity on your mobile phone.

Over-the-Air Control

Communicate in real time with your car, arm/disarm, receive alarms and send instructions.





Innovation

FleetMaster aims to improve the user interaction and to provide a very smart and innovative way of using such a tool.

For the best user experience, our Research & Development team is working continuously to develop special features and innovations.

Special Features and Innovations

MRS - Matrix Report System

Fully customized reporting system, with over 200 complex models which can be modified instantly by means of the Drag & Drop technology

ISS - Integrated Support System

Hardware and software integrated support technology with automatic reporting of the issues to the Support Centre and provision of Call Center services.

EXI - External XML Interface

Interface integration with external systems (ERP, data import, accounting, etc...)

IWS - Interactive Warehouse System

Interactive order delivery of goods to and from warehouses.

TAX - Taxi Management

Autonomous dispatching for transport companies and automatic transport management.

SAM - Security Alarm Management

Automatic dispatching of the alarms coming from security systems and automatic management of interventions.

PTT - Pivot Table Technology

One single Pivot table report replaces up to 100 standard reports. Any type of global situation per fleet that passes through a POI or address, unauthorized power, maximum speed in a point, unauthorized travels, divisions grouping versus cost centres, ordering km covered vs. Illegal stationing, are obtained in a few seconds, in any combination!

ATT - Advanced Time-Bar Technology

Exceptional graphical synthesizing with interpolation up to 50 variables per chart - localization and diagnosis for periods of years, in less than 2 seconds!

GDS - Green Drive System

Intelligent algorithm for scoring drivers in order to improve their efficiency.

GFS - Green Fleet System

Diagnosis and treatment of behaviour to improve fleet efficiency.

RTW - Real-Time Track & Weight

On-line control of the route and of the load carried, including Kg / Km reporting.

IRS - Interactive Route

Interactive tracking of the real time planning routes.

SPS - Spatial POI System

The spatial definition of the points of interest with the exact shape of the objective and the possibility of generating alerts from the street level.

MDA - Maxi Data Analyse System

Interpolated analysis of the fuel / km / speed and 40 engine parameters.

DDV - Dynamic Data View

Real-time multiple screens system with automatic graphical viewing of over 100 parameters interpolated into an exceptional dynamic presentation.

IVC - Integrated Video Comm

Audio- video real-time communication with the drivers and video surveillance of targets.

PPU - Pay per USE

Customization mode of the system allows the configuration in accordance to the needs of business and taxation according to use.

HDRA - High Definition Route Alert

Route alert right after leaving the road.

HAFD - High Accuracy Fuel Detection

System for detecting the fuel level in the tank with a resolution of 10 ml by means of the analysis of 8 parameters simultaneously using a particular interpolation algorithm.

RTFA - Real Time Fuel Alert

On-line control of the real fuel consumption for any vehicle or machine obtained by mathematical interpolation of all events (including theft).

RTDS - Real Time Diagnostics System

Automatic diagnostics and automatic identification system of the fleet problems with display on priority screens in an instant presentation.

SCS - Self Control System

Autonomous fleet tracking and control system without human dispatching based on programmed parameters and priorities, with automatic reporting of the key parameters.

FleetMaster™ is a complete Fleet Management Solution that combines Advanced Telematics Technology with Expert Software Development and Business Intelligence Analysis



fleetMaster

Briliant Technologies SRL

40 Louis Pasteur Street, 050536

5th District – Bucharest, Romania

Tel.: +40 21 636 36 08

Email: contact@fleetmaster.ro

www.fleetmaster.ro